

Peace of Mind at every Stage of Product Life

SIMOPRIME: Air Insulated Primary Distribution Switchgear



Technical Data

- Rated Voltage up to 17.5kV
- Rated Current up to 2500A
- Rated Frequency 50 / 60 Hz
- Rated Power-Frequency Withstand Voltage up to 38kV
- Rated Lightning-Impulse Withstand Voltage up to 95kV
- Rated Short-time Withstand Current, 3 Sec. up to 31.5kA
- Rated Short-time Peak Withstand Current up to 80kA

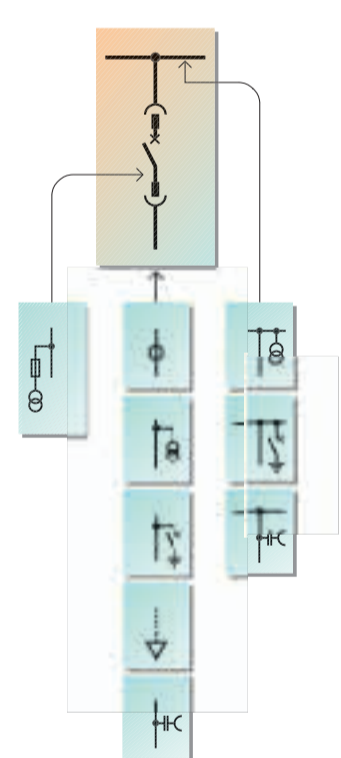
Standards

- IEC 62271 - 200
- IEC 62271 - 100

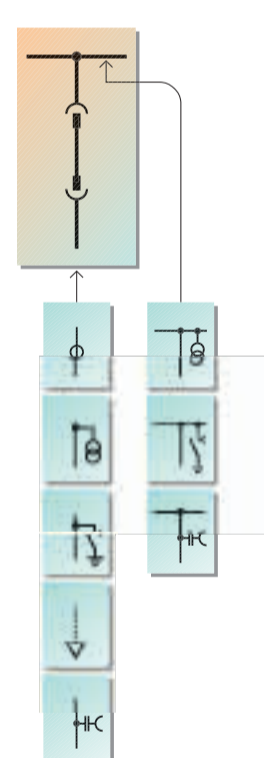
Dimensions

- Width: 600 / 800 mm
- Depth: 1860 mm
- Height: 2200 / 2437 mm

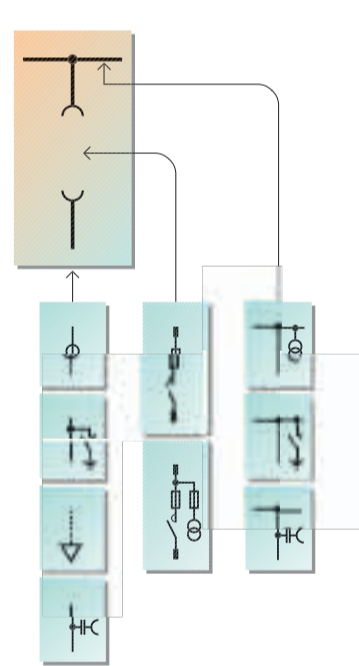
Product Range



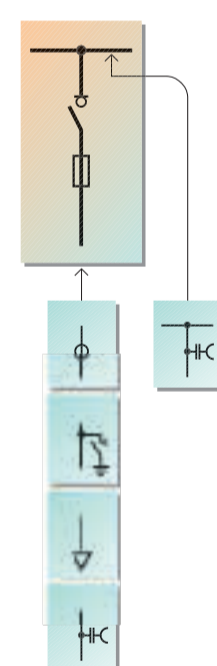
Circuit-breaker panel



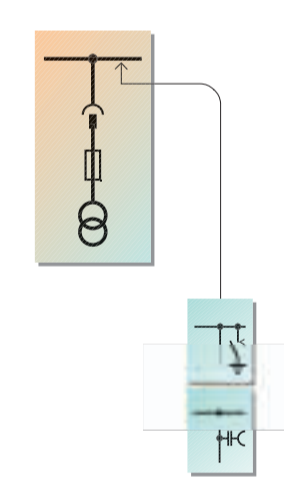
Disconnecting panel



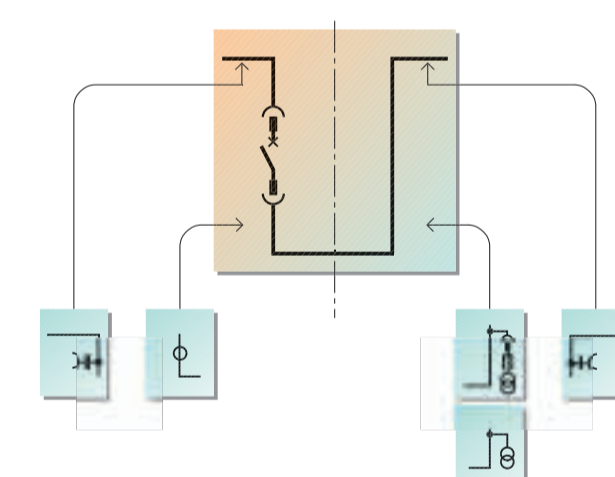
Vacuum contactor panel



Switch-disconnector panel



Metering panel



Bus sectionalizer

CUSTOMER BENEFITS:

1. Peace of Mind
2. Saves Lives
3. Increases Productivity
4. Saves Money

PRODUCT FEATURES:

1. Factory assembled type tested switchgear as per IEC 62271-200
2. Type testing of circuit breaker and make proof earthing switch inside the panel
3. All switching as well as rack-in / rack-out operations of switching device behind front switching device compartment door
4. Interlocking between switching device compartment door and the switching device
5. LSC2B-PM switchgear as per IEC 62271-200
6. Internal arc tested design IAC AFLR up to 31.5kA; 0.1/1.0 Sec.
7. Use of maintenance free vacuum circuit breaker from Siemens
8. Design based on global best practice sharing